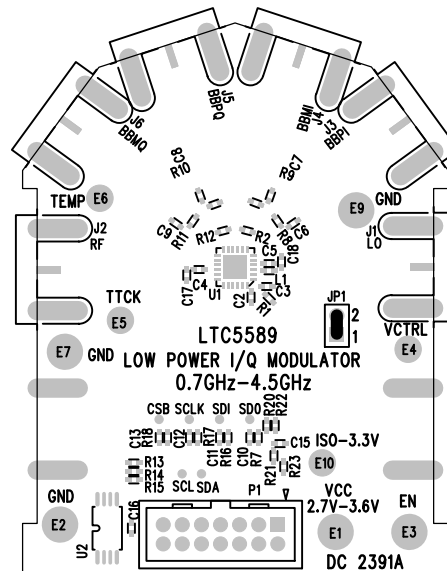


LTC DESIGNED  
IMPEDANCE TEST  
STRUCTURE COUPON



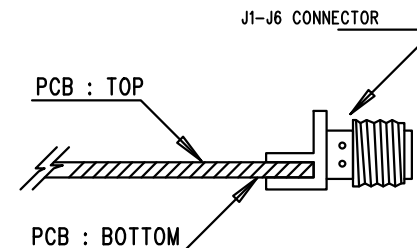
TOP SILKSCREEN  
LINEAR TECHNOLOGY  
DATE: 01-20-16  
LOW POWER I/Q MODULATOR  
0.7GHz-4.5GHz  
DC2391A-3-LTC5589IUF

#### REVISION HISTORY

ECO	REV	DESCRIPTION	APP. ENG.	DATE
-	3	PRODUCTION	ANDY M.	01-20-16

#### NOTES: UNLESS OTHERWISE SPECIFIED

1. WORKMANSHIP SHALL BE IN ACCORDANCE WITH IPC-A-610.
2. ASSEMBLY PROCESS SHALL INCLUDE: REFLOW SOLDER TOP SIDE SMD. MAXIMUM SOLDER TEMPERATURE IS 240 DEGREES CELSIUS.
3. PARTS TO OMIT WILL BE SPECIFIED ON THE BILL OF MATERIALS. LOCATIONS OF OMITTED PARTS SHALL BE FREE OF SOLDER. MASK THE SOLDER STENCIL WHERE SMT PARTS ARE OMITTED.
4. INSTALL SHUNTS AS SHOWN ON ASSY DRAWING.
5. DEPANELIZE BOARDS AFTER ASSEMBLY AND ROUTE-OUT THE BREAKOUT TABS ON FOUR SIDES OF THE BOARD EDGE.
6. DO NOT APPLY ANY KIND OF ASSEMBLY STAMP OR QA STAMP TO ANY BOARD.



#### APPROVALS

PCB DES.	AK
APP ENG.	ANDY M.



1630 MCCARTHY BLVD  
MILPITAS, CA 95035  
PH: (408)432-1900  
www.linear.com  
LTC CONFIDENTIAL-  
FOR CUSTOMER USE ONLY

TITLE: TOP ASSEMBLY DRAWING  
LOW POWER I/Q MODULATOR  
0.7GHz-4.5GHz

SIZE N/A	IC NO. LTC5599IUF DEMO CIRCUIT 2391A	REV. 3
-------------	--	-----------

SCALE = NONE

FILENAME: DC2391A-3.PCB

SHT 1 OF 1